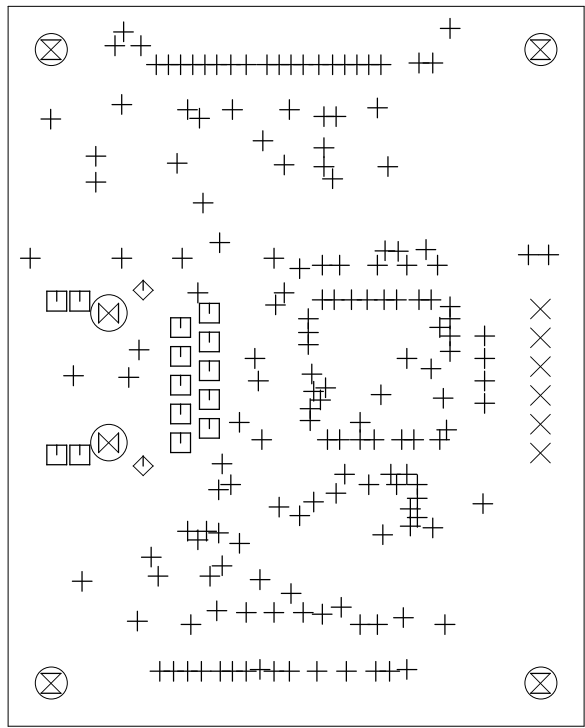


50.8mm  
43.18mm

63.5mm  
55.88mm



Sym	Nº	Mils	MM	Qty	Plated
+	1	15	0.38	167	YES
X	2	36	0.91	6	YES
□	3	39	1.00	14	YES
◇	4	63	1.60	2	YES
⊗	5	110	2.80	4	NOT
⊗	6	126	3.20	2	NOT

Notes

- 4 Layer PCB 1.6mm PCB
- Cortex.ly1 - Top Copper
- Cortex.ly2 - Layer 2 copper
- Cortex.ly3 - Layer 3 Copper
- Cortex.ly4 Bottom Copper
- Cortex.ss1 - Top Silk Screen
- Cortex.sr1 - Top Layer Solder Mask
- Cortex.sp1 - Top Solder Paste
- Cortex.ss4 - Bottom SilkScreen
- Cortex.sr4 - Bottom Solder Resist
- Cortex.sp4 - Solder Paste Solder
- Cortex.sp1 - Top Solder Paste

www.hotsolder.co.uk

Cortex  
04/05/2009 11:57:46  
Sheet: